

Industrial Batteries / Network Power

Classic OGi

»Superior performance for  
high current discharge«



## Industrial Batteries

### The powerful range of Network Power

GNB® Industrial Power offers reliable energy storage solutions for critical systems requiring uninterrupted power supply. With a comprehensive product range based on state-of-the-art technologies, GNB delivers the right battery for every application.

The below table is only indicative and depends on the specific customer application. For more information please ask a GNB sales representative.

APPLICATIONS	BATTERY RANGES																		
	Sonnenschein						Marathon			Sprinter		Absolyte	Powerfit	Classic					
	A400/A600	A400 FT	A500	SOLAR	RAIL	Power Cycle	M-FT	FTX	L/XL	P/XP	XP-FT	GP/GX	S100/S100L/S300	OCSM	OPzS	Energy Bloc/OGI	OPzS Solar	Ener-Sol	rail
UPS Data Centre	●	●	●			●	●	●	●	●	●	●		●		●			
Industrial UPS	●	●	●			●	●	●	●	●	●	●		●		●			
Telecom Good grid	●	●				●	●	●	●	●					●	●			
Telecom Poor & Off-grid				●		●						●		●				●	
Renewable				●		●						●						●	●
Emergency lighting	●	●	●			●	●	●	●	●	●	●		●		●		●	
Security	●		●							●	●		●	●	●				
Utility	●	●				●	●	●	●			●		●	●	●			
Railways	●	●	●		●	●	●		●			●		●		●			●

### Powerful product brands



- > VRLA batteries (**V**alve **R**egulated **L**ead **A**cid) in which the electrolyte is fixed in an **A**bsorbent **G**lass **M**at (AGM)
- > Excellent high current capability
- > Very economical
- > Maintenance-free (no topping up)



- > VRLA batteries (**V**alve **R**egulated **L**ead **A**cid) in which the electrolyte is fixed in a gel (dryfit® technology)
- > Inventor of Gel technology
- > Highest reliability, even in non-optimal conditions
- > Particularly suitable for cyclic applications
- > Maintenance-free (no topping up)



- > Conventional lead-acid batteries with liquid electrolyte
- > Extreme reliability, proven over decades
- > Low maintenance

## Classic OGi

### Optimized graduated battery sizes for high current demands

Classic OGi batteries are low maintenance lead acid batteries with liquid electrolyte tested and proven in the toughest field conditions. Due to their excellent voltage level in all load conditions they are ideal for high current applications with short discharge times.

#### Your benefits:

- > **High reliability and robustness** – long life time (20 years)
- > **Optimal energy density** – saves floor space
- > **Completely recyclable** – low CO<sub>2</sub>-Footprint



#### Specifications

- > Nominal Capacity 260 – 1600 Ah C<sub>10</sub>
- > 20 years design life at 20 °C ambient temperature (80 % remaining capacity from C<sub>10</sub>)
- > Low maintenance due to optimized alloy and high electrolyte reserve
- > Containers made from high quality transparent plastics
- > Positive and negative grid plates
- > Complies with IEC 60896-11
- > Low gassing due to less than 3 % antimony content (EN 50272-2)
- > Easy installation due to fully insulated connectors and screws
- > Manufactured in Europe in our ISO 9001 certified production plants



Design life in years: 20



Nominal capacity  
260 – 1600 Ah



Single cell



Grid plate



Recyclable



Low maintenance



Special high current performance

## Classic OGi

### Technical Data

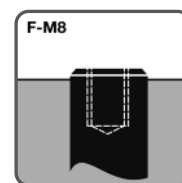
#### Technical characteristics and data

Type	Part number	Nom. voltage	Nominal capacity $C_{10}$ 1.80 $V_{pc}$ 20 °C Ah	Length (l)	Installed length (L)	Width (b/w)	Height (h)	Weight incl. acid	Weight acid	Internal resistance mOhm	Short circuit current A	Terminal	Pole pairs
		V		max. mm	max. mm	max. mm	max. mm	approx. kg	approx. kg				
4 OGi 260 LA	NVFP020260WC0FC	2	260	124	134	206	511	20.8	8.20	0.64	3150	F-M8	1
5 OGi 325 LA	NVFP020325WC0FC	2	325	124	134	206	511	22.9	7.90	0.53	3800	F-M8	1
6 OGi 370 LA	NVFP020370WC0FC	2	370	124	134	206	511	24.7	7.50	0.46	4350	F-M8	1
7 OGi 410 LA	NVFP020410WC0FC	2	410	124	134	206	511	26.6	7.30	0.41	4880	F-M8	1
8 OGi 440 LA	NVFP020440WC0FC	2	440	124	134	206	511	28.5	7.10	0.37	5400	F-M8	1
9 OGi 470 LA	NVFP020470WC0FC	2	470	124	134	206	511	30.6	6.90	0.34	5850	F-M8	1
10 OGi 530 LA	NVFP020530WC0FC	2	530	145	155	206	511	34.0	8.10	0.32	6300	F-M8	1
11 OGi 580 LA	NVFP020580WC0FC	2	580	166	176	206	511	38.3	9.80	0.30	6700	F-M8	1
12 OGi 620 LA	NVFP020620WC0FC	2	620	166	176	206	511	40.0	9.40	0.28	7050	F-M8	1
12 OGi 730 LA	NVFP020730WC0FB	2	730	210	220	254	511	50.3	17.5	0.25	8200	F-M8	2
14 OGi 800 LA	NVFP020800WC0FB	2	800	210	220	254	511	52.6	15.9	0.21	9750	F-M8	2
16 OGi 880 LA	NVFP020880WC0FB	2	880	210	220	254	511	56.6	15.5	0.19	10750	F-M8	2
19 OGi 1000 LA	NVFP021000WC0FB	2	1000	210	220	254	511	62.5	14.9	0.17	12050	F-M8	2
16 OGi 1260 LA	NVFP021260WC0FC	2	1260	210	220	233	688	78.2	18.3	0.16	12800	F-M8	2
18 OGi 1340 LA	NVFP021340WC0FC	2	1340	210	220	233	688	85.2	19.7	0.15	13600	F-M8	2
20 OGi 1520 LA	NVFP021520WC0FC	2	1520	210	220	275	688	95.2	22.3	0.14	14600	F-M8	2
22 OGi 1600 LA	NVFP021600WC0FC	2	1600	210	220	275	688	103	23.3	0.13	15750	F-M8	2

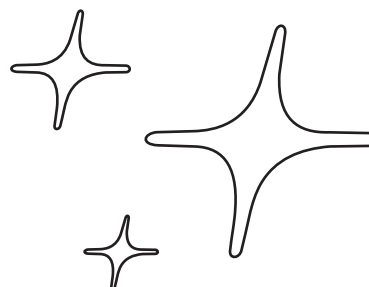
The above mentioned height can differ depending on the used vents  
 Acid density: 4 OGi 260 – 22 OGi 1600  $d_n=1.26$  kg/l

#### Container, terminal and torque

> Container: SAN (Styrene acrylonitrile)

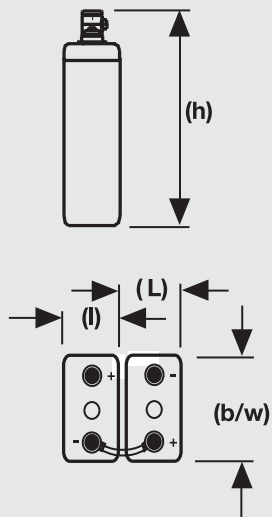


20 Nm

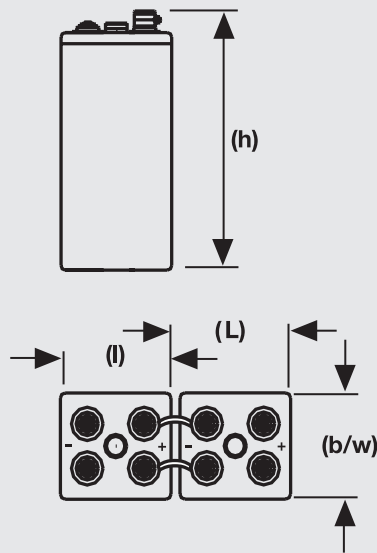


# Classic OGi Drawings

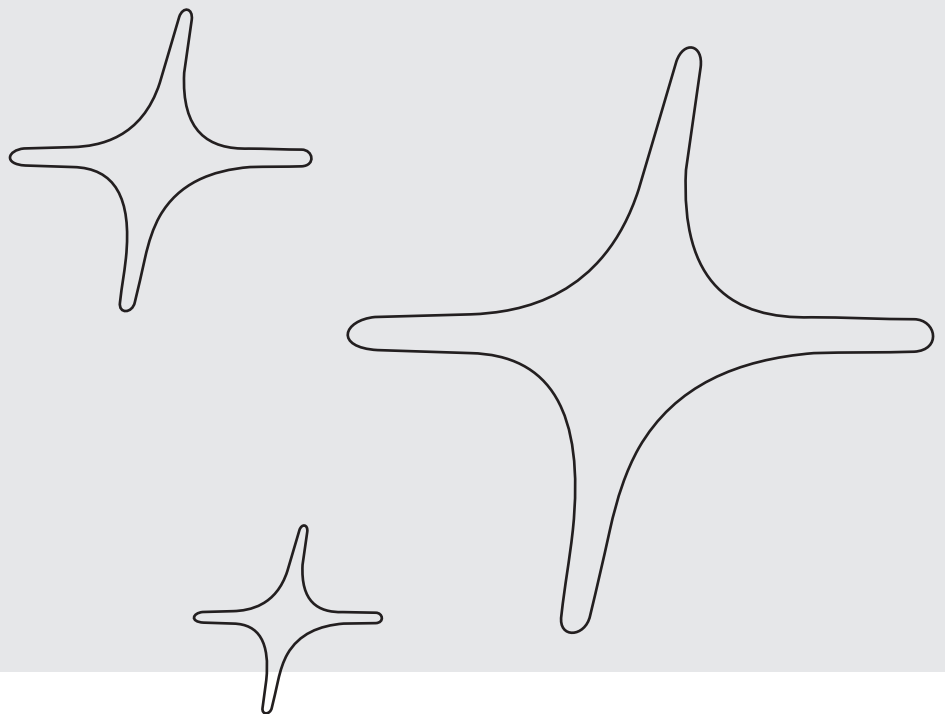
4 OGi 260 LA -  
12 OGi 620 LA



12 OGi 730 LA -  
22 OGi 1600 LA



Not to scale!



## Classic OGi

### Constant current discharge

#### 1.90 Vpc – Discharge in A at 20 °C

Type	Part number	3 min	5 min	10 min	15 min	20 min	30 min	45 min	1 h	2 h	3 h	5 h	8 h	10 h
4 OGi 260 LA	NVFP020260WC0FC	154	150	142	135	126	116	100	89.7	66.3	52.0	37.4	28.6	23.4
5 OGi 325 LA	NVFP020325WC0FC	192	187	177	169	158	145	125	112	82.8	65.0	46.8	35.8	29.3
6 OGi 370 LA	NVFP020370WC0FC	227	221	209	197	186	170	147	132	95.3	72.3	52.2	39.6	32.4
7 OGi 410 LA	NVFP020410WC0FC	261	255	240	224	214	196	170	153	108	79.6	57.6	43.5	35.5
8 OGi 440 LA	NVFP020440WC0FC	294	287	272	251	240	220	192	172	120	87.0	63.0	47.3	38.7
9 OGi 470 LA	NVFP020470WC0FC	321	314	299	275	264	242	212	190	133	94.4	68.4	51.2	41.9
10 OGi 530 LA	NVFP020530WC0FC	347	338	320	297	286	262	234	206	146	108	76.6	56.8	46.5
11 OGi 580 LA	NVFP020580WC0FC	370	360	339	317	305	282	253	221	159	122	84.8	62.5	51.2
12 OGi 620 LA	NVFP020620WC0FC	390	379	354	335	322	299	269	236	172	136	93.0	68.2	55.8
12 OGi 730 LA	NVFP020730WC0FB	433	421	398	381	364	342	308	274	203	154	107	80.3	65.7
14 OGi 800 LA	NVFP020800WC0FB	478	465	445	428	408	386	344	308	223	171	120	88.0	72.0
16 OGi 880 LA	NVFP020880WC0FB	526	514	490	469	447	423	371	337	242	186	130	95.0	77.8
19 OGi 1000 LA	NVFP021000WC0FB	598	583	558	529	504	478	412	374	269	206	144	106	86.4
16 OGi 1260 LA	NVFP021260WC0FC	680	665	643	613	582	546	475	431	319	254	183	129	107
18 OGi 1340 LA	NVFP021340WC0FC	736	721	692	658	618	578	510	461	343	274	197	139	116
20 OGi 1520 LA	NVFP021520WC0FC	785	768	736	704	668	617	555	502	374	302	217	154	128
22 OGi 1600 LA	NVFP021600WC0FC	829	811	775	744	705	650	590	531	397	320	230	163	136

#### 1.85 Vpc – Discharge in A at 20 °C

Type	Part number	3 min	5 min	10 min	15 min	20 min	30 min	45 min	1 h	2 h	3 h	5 h	8 h	10 h
4 OGi 260 LA	NVFP020260WC0FC	215	204	192	184	164	145	123	108	74.8	57.8	41.8	30.6	25.2
5 OGi 325 LA	NVFP020325WC0FC	268	254	240	230	205	182	154	135	93.6	72.2	52.3	38.0	31.0
6 OGi 370 LA	NVFP020370WC0FC	318	304	280	265	242	215	183	159	109	81.4	58.7	42.7	34.9
7 OGi 410 LA	NVFP020410WC0FC	367	353	321	300	278	248	211	183	124	90.6	65.2	47.0	38.6
8 OGi 440 LA	NVFP020440WC0FC	414	400	359	334	313	280	239	206	139	99.8	71.6	50.8	41.7
9 OGi 470 LA	NVFP020470WC0FC	456	443	396	367	347	311	266	230	155	109	78.0	55.0	45.1
10 OGi 530 LA	NVFP020530WC0FC	491	478	431	398	377	338	290	253	172	125	87.3	62.0	50.1
11 OGi 580 LA	NVFP020580WC0FC	520	506	464	428	405	363	313	275	189	141	96.6	67.1	55.1
12 OGi 620 LA	NVFP020620WC0FC	546	533	496	457	430	387	335	297	207	157	106	73.2	60.1
12 OGi 730 LA	NVFP020730WC0FB	661	637	589	548	502	442	376	334	237	177	123	86.2	70.8
14 OGi 800 LA	NVFP020800WC0FB	745	713	654	615	569	522	428	376	259	193	132	94.6	77.6
16 OGi 880 LA	NVFP020880WC0FB	800	768	701	660	609	557	462	406	279	209	143	102	83.8
19 OGi 1000 LA	NVFP021000WC0FB	884	850	774	728	668	608	514	451	310	232	159	115	95.0
16 OGi 1260 LA	NVFP021260WC0FC	978	937	871	828	780	704	607	538	379	299	208	143	119
18 OGi 1340 LA	NVFP021340WC0FC	1030	987	927	879	831	749	646	572	403	318	221	152	127
20 OGi 1520 LA	NVFP021520WC0FC	1087	1044	982	931	885	810	706	639	456	359	251	173	143
22 OGi 1600 LA	NVFP021600WC0FC	1139	1099	1036	981	934	853	743	672	480	378	264	182	151

## Classic OGi

### Constant current discharge

#### 1.80 Vpc – Discharge in A at 20 °C

Type	Part number	3 min	5 min	10 min	15 min	20 min	30 min	45 min	1 h	2 h	3 h	5 h	8 h	10 h
4 OGi 260 LA	NVFP020260WC0FC	276	257	235	223	194	167	139	117	80.9	61.5	44.6	32.1	26.0
5 OGi 325 LA	NVFP020325WC0FC	345	321	294	279	242	208	174	151	101	76.9	55.8	39.2	32.5
6 OGi 370 LA	NVFP020370WC0FC	408	384	344	321	286	248	206	179	118	87.7	62.6	44.9	37.0
7 OGi 410 LA	NVFP020410WC0FC	472	446	393	364	329	287	239	204	135	98.5	69.5	49.5	41.0
8 OGi 440 LA	NVFP020440WC0FC	533	506	442	406	372	325	271	229	152	109	76.3	53.8	44.0
9 OGi 470 LA	NVFP020470WC0FC	588	562	489	447	413	360	302	255	168	120	83.1	57.9	47.0
10 OGi 530 LA	NVFP020530WC0FC	631	604	534	487	451	394	330	281	187	136	93.0	64.9	53.0
11 OGi 580 LA	NVFP020580WC0FC	664	639	577	526	487	425	356	306	206	153	103	71.1	58.0
12 OGi 620 LA	NVFP020620WC0FC	693	670	619	565	520	454	383	335	225	169	113	76.0	62.0
12 OGi 730 LA	NVFP020730WC0FB	846	804	731	670	613	538	424	372	253	190	128	87.4	73.0
14 OGi 800 LA	NVFP020800WC0FB	977	925	832	762	702	627	494	418	282	208	141	98.0	80.0
16 OGi 880 LA	NVFP020880WC0FB	1052	998	891	818	745	663	533	459	304	225	153	107	88.0
19 OGi 1000 LA	NVFP021000WC0FB	1161	1102	968	901	809	714	592	510	338	250	170	122	100
16 OGi 1260 LA	NVFP021260WC0FC	1260	1206	1087	1009	932	827	700	617	424	328	223	153	126
18 OGi 1340 LA	NVFP021340WC0FC	1323	1269	1154	1071	989	884	753	658	451	349	237	163	134
20 OGi 1520 LA	NVFP021520WC0FC	1381	1326	1221	1138	1076	969	829	744	512	395	269	185	152
22 OGi 1600 LA	NVFP021600WC0FC	1439	1383	1282	1200	1138	1025	873	783	539	416	283	195	160

#### 1.75 Vpc – Discharge in A at 20 °C

Type	Part number	3 min	5 min	10 min	15 min	20 min	30 min	45 min	1 h	2 h	3 h	5 h	8 h	10 h
4 OGi 260 LA	NVFP020260WC0FC	337	309	275	247	217	181	151	128	84.7	63.7	46.2	33.1	26.3
5 OGi 325 LA	NVFP020325WC0FC	421	386	344	320	271	226	188	160	106	79.6	57.7	41.2	32.8
6 OGi 370 LA	NVFP020370WC0FC	499	460	403	369	321	270	224	188	124	91.6	64.8	46.2	37.4
7 OGi 410 LA	NVFP020410WC0FC	577	535	461	418	371	314	259	217	141	104	71.8	50.5	41.4
8 OGi 440 LA	NVFP020440WC0FC	653	607	519	468	421	356	295	246	159	116	78.9	54.5	44.4
9 OGi 470 LA	NVFP020470WC0FC	723	672	573	517	470	398	329	274	176	128	85.9	58.4	47.5
10 OGi 530 LA	NVFP020530WC0FC	773	725	627	565	514	436	360	303	196	143	95.9	65.7	53.5
11 OGi 580 LA	NVFP020580WC0FC	811	767	678	612	556	471	389	332	215	159	106	71.7	58.6
12 OGi 620 LA	NVFP020620WC0FC	846	805	728	659	597	504	418	361	234	175	116	76.8	62.6
12 OGi 730 LA	NVFP020730WC0FB	1029	963	847	755	683	585	465	402	264	198	134	88.0	73.7
14 OGi 800 LA	NVFP020800WC0FB	1194	1113	978	882	802	702	544	459	295	217	148	99.0	80.8
16 OGi 880 LA	NVFP020880WC0FB	1291	1205	1053	953	854	741	587	496	319	234	160	108	88.9
19 OGi 1000 LA	NVFP021000WC0FB	1433	1338	1157	1056	937	803	654	551	354	260	178	123	101
16 OGi 1260 LA	NVFP021260WC0FC	1509	1432	1273	1174	1071	934	783	674	452	342	230	156	130
18 OGi 1340 LA	NVFP021340WC0FC	1579	1505	1356	1252	1151	1001	843	721	481	364	245	166	138
20 OGi 1520 LA	NVFP021520WC0FC	1654	1578	1439	1333	1248	1107	932	820	545	413	278	189	157
22 OGi 1600 LA	NVFP021600WC0FC	1728	1651	1513	1403	1313	1169	981	863	574	435	292	199	165

## Classic OGi

### Constant current discharge

#### 1.70 Vpc – Discharge in A at 20 °C

Type	Part number	3 min	5 min	10 min	15 min	20 min	30 min	45 min	1 h	2 h	3 h	5 h	8 h	10 h
4 OGi 260 LA	NVFP020260WC0FC	395	360	312	283	236	194	158	132	86.9	64.5	46.8	33.6	26.4
5 OGi 325 LA	NVFP020325WC0FC	494	450	390	354	295	242	198	165	109	80.6	58.5	42.0	33.0
6 OGi 370 LA	NVFP020370WC0FC	585	536	459	411	351	290	236	196	127	93.6	65.8	46.8	37.6
7 OGi 410 LA	NVFP020410WC0FC	676	622	527	468	407	338	274	227	145	107	73.1	51.3	41.6
8 OGi 440 LA	NVFP020440WC0FC	765	706	593	525	462	384	312	259	163	120	80.4	54.8	44.7
9 OGi 470 LA	NVFP020470WC0FC	848	783	655	581	515	428	349	290	181	133	87.7	58.9	47.7
10 OGi 530 LA	NVFP020530WC0FC	906	839	714	636	566	471	383	320	200	148	97.9	66.0	53.8
11 OGi 580 LA	NVFP020580WC0FC	949	885	771	690	615	509	415	350	219	163	108	72.1	58.9
12 OGi 620 LA	NVFP020620WC0FC	986	930	824	744	661	545	446	380	238	178	118	77.1	62.9
12 OGi 730 LA	NVFP020730WC0FB	1196	1108	946	837	748	630	502	426	271	201	137	89.0	74.1
14 OGi 800 LA	NVFP020800WC0FB	1381	1286	1109	984	882	758	580	486	303	222	153	99.5	81.2
16 OGi 880 LA	NVFP020880WC0FB	1505	1402	1205	1071	952	807	628	527	328	240	166	109	89.3
19 OGi 1000 LA	NVFP021000WC0FB	1685	1570	1342	1201	1056	880	701	589	364	267	184	124	102
16 OGi 1260 LA	NVFP021260WC0FC	1744	1643	1456	1321	1201	1025	849	723	466	349	235	158	132
18 OGi 1340 LA	NVFP021340WC0FC	1834	1733	1550	1409	1283	1102	916	775	499	373	250	169	140
20 OGi 1520 LA	NVFP021520WC0FC	1919	1822	1643	1503	1392	1221	1014	877	562	422	284	191	158
22 OGi 1600 LA	NVFP021600WC0FC	2003	1911	1732	1591	1465	1289	1071	923	592	444	299	201	167

#### 1.65 Vpc – Discharge in A at 20 °C

Type	Part number	3 min	5 min	10 min	15 min	20 min	30 min	45 min	1 h	2 h	3 h	5 h	8 h	10 h
4 OGi 260 LA	NVFP020260WC0FC	453	412	349	304	254	205	165	134	88.6	65.2	47.0	33.7	26.5
5 OGi 325 LA	NVFP020325WC0FC	566	515	437	380	318	257	206	167	111	81.5	58.8	42.2	33.2
6 OGi 370 LA	NVFP020370WC0FC	670	612	514	445	380	308	246	201	129	95.3	66.3	47.0	37.7
7 OGi 410 LA	NVFP020410WC0FC	775	710	592	511	442	360	286	234	148	109	73.9	51.5	41.8
8 OGi 440 LA	NVFP020440WC0FC	877	804	667	577	504	411	326	268	167	123	81.4	55.1	44.9
9 OGi 470 LA	NVFP020470WC0FC	970	890	737	641	564	459	364	301	185	137	88.9	59.2	47.9
10 OGi 530 LA	NVFP020530WC0FC	1036	960	802	700	619	503	400	332	204	152	99.3	66.3	54.1
11 OGi 580 LA	NVFP020580WC0FC	1084	1010	856	757	671	545	436	363	224	167	110	72.4	59.2
12 OGi 620 LA	NVFP020620WC0FC	1128	1058	908	815	722	584	471	394	243	182	120	77.5	63.2
12 OGi 730 LA	NVFP020730WC0FB	1350	1248	1041	910	811	668	525	438	276	205	139	89.9	74.5
14 OGi 800 LA	NVFP020800WC0FB	1553	1451	1222	1073	957	811	614	507	311	227	157	100	81.6
16 OGi 880 LA	NVFP020880WC0FB	1707	1593	1346	1174	1039	868	665	550	336	245	170	110	89.8
19 OGi 1000 LA	NVFP021000WC0FB	1924	1799	1526	1324	1160	952	740	614	374	272	189	124	102
16 OGi 1260 LA	NVFP021260WC0FC	1972	1852	1630	1451	1316	1108	900	755	476	354	236	159	132
18 OGi 1340 LA	NVFP021340WC0FC	2078	1957	1729	1550	1404	1186	966	803	507	377	251	169	141
20 OGi 1520 LA	NVFP021520WC0FC	2184	2063	1834	1669	1529	1316	1084	914	575	427	285	192	159
22 OGi 1600 LA	NVFP021600WC0FC	2279	2168	1933	1758	1612	1388	1142	962	605	450	300	202	167



**Classic OGi**

**Constant current discharge**

**1.60 Vpc – Discharge in A at 20 °C**

Type	Part number	3 min	5 min	10 min	15 min	20 min	30 min	45 min	1 h	2 h	3 h	5 h	8 h	10 h
4 OGi 260 LA	NVFP020260WC0FC	510	462	386	321	272	215	169	136	89.5	65.5	47.3	33.9	26.7
5 OGi 325 LA	NVFP020325WC0FC	638	577	483	402	340	269	212	170	112	81.8	59.1	42.4	33.3
6 OGi 370 LA	NVFP020370WC0FC	756	685	570	477	407	324	253	206	131	96.1	66.8	47.3	37.9
7 OGi 410 LA	NVFP020410WC0FC	873	794	656	553	475	380	295	242	150	110	84.5	51.8	42.0
8 OGi 440 LA	NVFP020440WC0FC	988	898	740	627	540	433	336	278	169	125	82.2	55.4	45.1
9 OGi 470 LA	NVFP020470WC0FC	1092	991	814	697	603	484	376	314	188	139	89.9	59.5	48.2
10 OGi 530 LA	NVFP020530WC0FC	1172	1070	881	763	664	533	416	346	207	154	100	66.6	54.3
11 OGi 580 LA	NVFP020580WC0FC	1220	1127	931	823	721	577	454	377	226	170	111	72.8	59.5
12 OGi 620 LA	NVFP020620WC0FC	1268	1181	982	880	777	618	492	409	245	185	121	77.9	63.6
12 OGi 730 LA	NVFP020730WC0FB	1500	1377	1134	988	868	702	544	450	281	209	142	90.5	74.8
14 OGi 800 LA	NVFP020800WC0FB	1712	1598	1323	1162	1024	853	643	528	317	231	161	100	82.0
16 OGi 880 LA	NVFP020880WC0FB	1892	1762	1475	1277	1113	919	695	571	343	249	174	111	90.2
19 OGi 1000 LA	NVFP021000WC0FB	2157	2005	1701	1450	1258	1014	773	634	381	277	193	125	103
16 OGi 1260 LA	NVFP021260WC0FC	2205	2052	1790	1585	1414	1175	939	779	480	354	237	160	133
18 OGi 1340 LA	NVFP021340WC0FC	2321	2168	1905	1688	1508	1253	1003	828	511	377	253	170	141
20 OGi 1520 LA	NVFP021520WC0FC	2438	2289	2022	1818	1644	1392	1138	944	579	427	287	193	160
22 OGi 1600 LA	NVFP021600WC0FC	2555	2416	2129	1913	1731	1464	1198	994	610	450	302	203	168



## Classic OGi

### Constant power discharge

#### 1.90 Vpc – Discharge in W/cell at 20 °C

Type	Part number	3 min	5 min	10 min	15 min	20 min	30 min	45 min	1 h	2 h	3 h	5 h	8 h	10 h
4 OGi 260 LA	NVFP020260WC0FC	293	285	271	258	241	222	192	173	129	102	73.7	56.6	46.4
5 OGi 325 LA	NVFP020325WC0FC	365	356	338	323	302	278	240	216	161	127	92.1	70.7	58.0
6 OGi 370 LA	NVFP020370WC0FC	432	421	399	376	356	326	284	255	185	141	103	78.3	64.2
7 OGi 410 LA	NVFP020410WC0FC	496	485	458	428	409	376	328	294	209	156	113	85.9	70.5
8 OGi 440 LA	NVFP020440WC0FC	559	546	519	479	459	422	369	331	234	170	124	93.6	76.7
9 OGi 470 LA	NVFP020470WC0FC	611	598	570	525	505	464	407	366	258	185	135	101	82.9
10 OGi 530 LA	NVFP020530WC0FC	660	643	610	567	547	502	450	397	284	212	151	112	92.2
11 OGi 580 LA	NVFP020580WC0FC	704	685	646	605	583	540	486	426	309	239	167	124	101
12 OGi 620 LA	NVFP020620WC0FC	742	721	675	640	616	573	518	454	335	267	183	135	111
12 OGi 730 LA	NVFP020730WC0FB	824	801	759	728	696	655	592	528	395	301	211	159	130
14 OGi 800 LA	NVFP020800WC0FB	909	885	849	817	780	740	661	594	434	334	236	174	143
16 OGi 880 LA	NVFP020880WC0FB	1000	978	934	896	855	810	714	649	471	363	255	188	154
19 OGi 1000 LA	NVFP021000WC0FB	1137	1109	1064	1010	964	916	793	721	523	404	284	209	171
16 OGi 1260 LA	NVFP021260WC0FC	1293	1265	1226	1171	1113	1046	913	831	620	497	360	254	212
18 OGi 1340 LA	NVFP021340WC0FC	1400	1372	1320	1257	1182	1107	980	888	667	536	388	275	230
20 OGi 1520 LA	NVFP021520WC0FC	1493	1462	1404	1345	1277	1182	1067	967	727	590	427	305	254
22 OGi 1600 LA	NVFP021600WC0FC	1577	1543	1478	1421	1348	1245	1135	1024	772	626	454	323	270

#### 1.85 Vpc – Discharge in W/cell at 20 °C

Type	Part number	3 min	5 min	10 min	15 min	20 min	30 min	45 min	1 h	2 h	3 h	5 h	8 h	10 h
4 OGi 260 LA	NVFP020260WC0FC	399	379	358	344	308	273	233	205	144	112	81.4	60.2	49.7
5 OGi 325 LA	NVFP020325WC0FC	497	472	448	431	385	343	292	257	180	139	102	74.6	61.1
6 OGi 370 LA	NVFP020370WC0FC	590	565	523	496	454	405	347	302	209	157	114	83.8	68.8
7 OGi 410 LA	NVFP020410WC0FC	681	657	599	562	522	467	400	348	238	175	127	92.4	76.0
8 OGi 440 LA	NVFP020440WC0FC	768	744	670	625	588	528	453	392	267	193	139	99.7	82.2
9 OGi 470 LA	NVFP020470WC0FC	846	824	739	687	652	586	504	437	298	211	152	108	88.9
10 OGi 530 LA	NVFP020530WC0FC	911	889	805	745	708	637	549	481	330	242	170	122	98.7
11 OGi 580 LA	NVFP020580WC0FC	965	941	866	801	761	684	593	523	363	272	188	132	109
12 OGi 620 LA	NVFP020620WC0FC	1013	991	926	856	808	729	634	565	397	303	206	144	118
12 OGi 730 LA	NVFP020730WC0FB	1226	1185	1100	1026	943	833	712	635	455	342	240	169	139
14 OGi 800 LA	NVFP020800WC0FB	1382	1326	1221	1151	1069	984	811	715	497	373	257	186	153
16 OGi 880 LA	NVFP020880WC0FB	1484	1428	1309	1236	1144	1050	875	772	536	404	279	200	165
19 OGi 1000 LA	NVFP021000WC0FB	1640	1581	1445	1363	1255	1146	974	858	595	448	310	227	187
16 OGi 1260 LA	NVFP021260WC0FC	1814	1743	1626	1550	1465	1327	1150	1023	728	578	405	282	236
18 OGi 1340 LA	NVFP021340WC0FC	1911	1836	1731	1645	1561	1412	1224	1088	774	614	431	300	251
20 OGi 1520 LA	NVFP021520WC0FC	2016	1942	1833	1743	1662	1527	1337	1215	876	694	489	340	283
22 OGi 1600 LA	NVFP021600WC0FC	2113	2044	1934	1836	1754	1608	1407	1278	922	730	514	358	298

## Classic OGi

### Constant power discharge

#### 1.80 Vpc – Discharge in W/cell at 20 °C

Type	Part number	3 min	5 min	10 min	15 min	20 min	30 min	45 min	1 h	2 h	3 h	5 h	8 h	10 h
4 OGi 260 LA	NVFP020260WC0FC	499	466	428	408	357	309	259	219	154	118	86.3	62.7	51.0
5 OGi 325 LA	NVFP020325WC0FC	623	582	536	511	445	385	325	283	192	147	108	76.5	62.8
6 OGi 370 LA	NVFP020370WC0FC	737	696	627	588	526	459	384	336	224	168	121	87.6	72.6
7 OGi 410 LA	NVFP020410WC0FC	853	808	716	666	605	531	446	383	257	189	135	96.6	80.4
8 OGi 440 LA	NVFP020440WC0FC	963	917	805	743	684	601	505	429	289	209	148	105	86.3
9 OGi 470 LA	NVFP020470WC0FC	1063	1018	891	818	760	666	563	478	319	230	161	113	92.2
10 OGi 530 LA	NVFP020530WC0FC	1140	1094	973	892	830	729	615	527	355	261	180	127	104
11 OGi 580 LA	NVFP020580WC0FC	1200	1158	1051	963	896	786	664	574	392	293	199	139	114
12 OGi 620 LA	NVFP020620WC0FC	1252	1214	1128	1035	957	840	714	628	428	324	219	148	122
12 OGi 730 LA	NVFP020730WC0FB	1529	1457	1332	1227	1128	995	791	698	481	364	248	171	143
14 OGi 800 LA	NVFP020800WC0FB	1765	1676	1516	1395	1292	1160	921	784	536	399	273	191	157
16 OGi 880 LA	NVFP020880WC0FB	1901	1808	1623	1498	1371	1227	994	861	578	432	296	209	173
19 OGi 1000 LA	NVFP021000WC0FB	2098	1997	1764	1650	1489	1321	1104	956	643	480	329	238	196
16 OGi 1260 LA	NVFP021260WC0FC	2277	2185	1981	1847	1715	1530	1306	1157	806	629	432	299	247
18 OGi 1340 LA	NVFP021340WC0FC	2391	2299	2103	1961	1820	1635	1404	1234	857	669	459	318	263
20 OGi 1520 LA	NVFP021520WC0FC	2495	2403	2225	2084	1980	1793	1546	1395	973	758	521	361	298
22 OGi 1600 LA	NVFP021600WC0FC	2600	2506	2336	2197	2094	1896	1628	1468	1025	798	548	381	314

#### 1.75 Vpc – Discharge in W/cell at 20 °C

Type	Part number	3 min	5 min	10 min	15 min	20 min	30 min	45 min	1 h	2 h	3 h	5 h	8 h	10 h
4 OGi 260 LA	NVFP020260WC0FC	593	545	490	442	391	329	277	237	160	122	89.0	64.4	51.5
5 OGi 325 LA	NVFP020325WC0FC	741	681	612	573	488	411	345	297	200	152	111	80.2	64.2
6 OGi 370 LA	NVFP020370WC0FC	878	812	717	661	578	491	411	349	234	175	125	89.9	73.2
7 OGi 410 LA	NVFP020410WC0FC	1016	944	821	748	668	571	476	403	266	198	139	98.3	81.1
8 OGi 440 LA	NVFP020440WC0FC	1149	1071	924	838	758	647	542	456	300	221	152	106	86.9
9 OGi 470 LA	NVFP020470WC0FC	1272	1186	1020	925	846	723	604	508	332	244	166	114	93.0
10 OGi 530 LA	NVFP020530WC0FC	1360	1280	1116	1011	925	792	661	562	370	273	185	128	105
11 OGi 580 LA	NVFP020580WC0FC	1427	1354	1207	1095	1001	856	715	616	406	303	204	140	115
12 OGi 620 LA	NVFP020620WC0FC	1489	1421	1296	1180	1075	916	768	670	442	334	224	149	123
12 OGi 730 LA	NVFP020730WC0FB	1811	1700	1508	1351	1229	1063	854	746	498	378	258	172	144
14 OGi 800 LA	NVFP020800WC0FB	2101	1964	1741	1579	1444	1276	999	851	557	414	285	193	158
16 OGi 880 LA	NVFP020880WC0FB	2272	2127	1874	1706	1537	1346	1078	920	602	446	309	210	174
19 OGi 1000 LA	NVFP021000WC0FB	2522	2362	2059	1890	1687	1459	1201	1022	668	496	343	239	198
16 OGi 1260 LA	NVFP021260WC0FC	2656	2527	2266	2101	1928	1697	1438	1250	853	653	444	304	255
18 OGi 1340 LA	NVFP021340WC0FC	2779	2656	2414	2241	2072	1819	1549	1337	908	695	473	323	270
20 OGi 1520 LA	NVFP021520WC0FC	2911	2785	2561	2386	2246	2011	1712	1521	1028	788	536	368	307
22 OGi 1600 LA	NVFP021600WC0FC	3041	2914	2693	2511	2363	2124	1802	1601	1083	830	563	387	323

## Classic OGi

### Constant power discharge

#### 1.70 Vpc – Discharge in W/cell at 20 °C

Type	Part number	3 min	5 min	10 min	15 min	20 min	30 min	45 min	1 h	2 h	3 h	5 h	8 h	10 h
4 OGi 260 LA	NVFP020260WC0FC	675	617	540	494	415	346	286	242	163	123	90.0	65.3	51.6
5 OGi 325 LA	NVFP020325WC0FC	845	772	675	618	519	432	358	302	205	153	112	81.6	64.5
6 OGi 370 LA	NVFP020370WC0FC	1000	919	794	718	618	518	427	359	239	178	126	90.9	73.5
7 OGi 410 LA	NVFP020410WC0FC	1156	1067	912	817	716	603	496	415	273	204	140	99.6	81.3
8 OGi 440 LA	NVFP020440WC0FC	1308	1211	1026	917	813	685	565	474	306	228	155	106	87.4
9 OGi 470 LA	NVFP020470WC0FC	1450	1343	1133	1014	906	764	632	531	340	253	169	114	93.3
10 OGi 530 LA	NVFP020530WC0FC	1549	1439	1235	1110	996	841	693	586	376	282	188	128	105
11 OGi 580 LA	NVFP020580WC0FC	1623	1518	1334	1205	1082	909	751	641	412	310	208	140	115
12 OGi 620 LA	NVFP020620WC0FC	1686	1595	1426	1299	1163	973	807	695	447	339	227	150	123
12 OGi 730 LA	NVFP020730WC0FB	2045	1900	1637	1461	1316	1125	909	780	509	383	263	173	145
14 OGi 800 LA	NVFP020800WC0FB	2362	2205	1919	1718	1552	1353	1050	889	570	422	294	193	159
16 OGi 880 LA	NVFP020880WC0FB	2574	2404	2085	1870	1676	1440	1137	964	617	457	319	212	175
19 OGi 1000 LA	NVFP021000WC0FB	2881	2693	2322	2097	1859	1571	1269	1078	684	508	354	241	199
16 OGi 1260 LA	NVFP021260WC0FC	2982	2818	2519	2306	2114	1830	1537	1323	876	664	452	307	258
18 OGi 1340 LA	NVFP021340WC0FC	3136	2972	2682	2460	2258	1967	1658	1418	938	710	481	328	274
20 OGi 1520 LA	NVFP021520WC0FC	3281	3125	2842	2624	2450	2179	1835	1605	1057	803	546	371	309
22 OGi 1600 LA	NVFP021600WC0FC	3425	3277	2996	2778	2578	2301	1939	1689	1113	845	575	390	326

#### 1.65 Vpc – Discharge in W/cell at 20 °C

Type	Part number	3 min	5 min	10 min	15 min	20 min	30 min	45 min	1 h	2 h	3 h	5 h	8 h	10 h
4 OGi 260 LA	NVFP020260WC0FC	753	690	593	521	439	360	296	243	166	124	90.0	65.4	51.8
5 OGi 325 LA	NVFP020325WC0FC	941	862	743	652	550	451	370	303	208	154	113	81.9	64.9
6 OGi 370 LA	NVFP020370WC0FC	1114	1024	874	763	657	541	442	365	242	181	127	91.2	73.7
7 OGi 410 LA	NVFP020410WC0FC	1288	1189	1006	876	765	632	513	425	278	207	142	100	81.7
8 OGi 440 LA	NVFP020440WC0FC	1458	1346	1134	990	872	722	585	486	313	233	156	107	87.8
9 OGi 470 LA	NVFP020470WC0FC	1612	1490	1253	1099	976	806	653	546	347	260	171	115	93.6
10 OGi 530 LA	NVFP020530WC0FC	1722	1607	1363	1201	1071	883	718	603	383	288	191	129	106
11 OGi 580 LA	NVFP020580WC0FC	1802	1691	1455	1298	1161	957	783	659	420	316	211	140	116
12 OGi 620 LA	NVFP020620WC0FC	1875	1771	1544	1398	1249	1026	845	715	456	345	230	150	124
12 OGi 730 LA	NVFP020730WC0FB	2244	2089	1770	1561	1403	1173	942	795	518	388	267	174	146
14 OGi 800 LA	NVFP020800WC0FB	2581	2429	2077	1840	1656	1424	1102	920	583	430	301	194	160
16 OGi 880 LA	NVFP020880WC0FB	2837	2667	2288	2013	1797	1524	1194	998	630	464	326	213	176
19 OGi 1000 LA	NVFP021000WC0FB	3198	3012	2594	2271	2007	1672	1328	1114	701	515	363	242	199
16 OGi 1260 LA	NVFP021260WC0FC	3277	3100	2771	2488	2277	1946	1616	1370	893	671	453	308	258
18 OGi 1340 LA	NVFP021340WC0FC	3454	3276	2939	2658	2429	2083	1734	1457	951	714	482	328	276
20 OGi 1520 LA	NVFP021520WC0FC	3630	3453	3118	2862	2645	2311	1946	1659	1078	809	547	372	311
22 OGi 1600 LA	NVFP021600WC0FC	3788	3629	3286	3015	2789	2437	2050	1746	1134	853	576	392	326

**Classic OGi**

**Constant power discharge**

**1.60 Vpc – Discharge in W/cell at 20 °C**

Type	Part number	3 min	5 min	10 min	15 min	20 min	30 min	45 min	1 h	2 h	3 h	5 h	8 h	10 h
4 OGi 260 LA	NVFP020260WC0FC	824	754	638	539	462	373	300	245	167	124	90.8	65.8	52.2
5 OGi 325 LA	NVFP020325WC0FC	1031	942	799	675	578	467	376	307	209	155	113	82.3	65.1
6 OGi 370 LA	NVFP020370WC0FC	1222	1118	943	801	692	562	449	372	245	182	128	91.8	74.1
7 OGi 410 LA	NVFP020410WC0FC	1411	1296	1085	929	808	659	524	437	281	208	162	100	82.1
8 OGi 440 LA	NVFP020440WC0FC	1597	1466	1224	1053	918	751	596	502	316	237	158	107	88.2
9 OGi 470 LA	NVFP020470WC0FC	1765	1617	1346	1171	1025	840	667	567	352	263	173	115	94.2
10 OGi 530 LA	NVFP020530WC0FC	1894	1746	1457	1282	1129	925	738	625	387	292	192	129	106
11 OGi 580 LA	NVFP020580WC0FC	1972	1839	1540	1383	1226	1001	806	680	423	322	213	141	116
12 OGi 620 LA	NVFP020620WC0FC	2049	1927	1624	1478	1321	1072	873	738	458	351	232	151	124
12 OGi 730 LA	NVFP020730WC0FB	2424	2247	1876	1660	1476	1218	966	812	525	396	273	175	146
14 OGi 800 LA	NVFP020800WC0FB	2767	2608	2188	1952	1741	1480	1141	953	593	438	309	194	160
16 OGi 880 LA	NVFP020880WC0FB	3057	2876	2440	2145	1892	1594	1234	1031	641	472	334	214	176
19 OGi 1000 LA	NVFP021000WC0FB	3486	3272	2813	2436	2139	1759	1372	1144	712	525	371	243	201
16 OGi 1260 LA	NVFP021260WC0FC	3563	3349	2961	2663	2404	2039	1667	1406	898	671	455	310	260
18 OGi 1340 LA	NVFP021340WC0FC	3751	3538	3151	2836	2564	2174	1780	1495	956	714	486	330	276
20 OGi 1520 LA	NVFP021520WC0FC	3940	3736	3344	3054	2795	2415	2020	1704	1083	809	551	374	313
22 OGi 1600 LA	NVFP021600WC0FC	4129	3943	3521	3214	2943	2540	2126	1794	1141	853	580	394	328



## Battery Service – Energy Solutions

Keeping your business on the move

### GNB® is the Expert

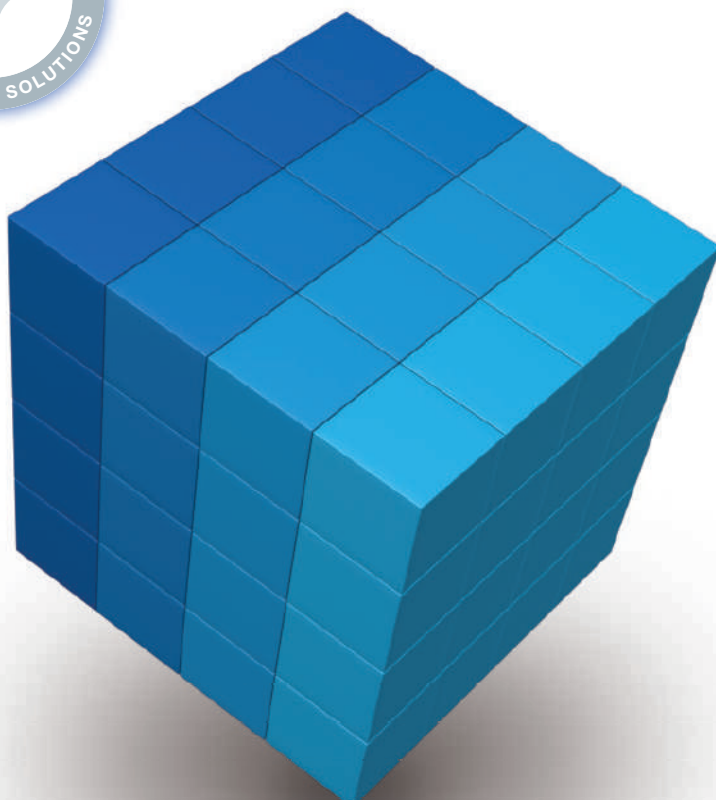
Who could do this job better than the professionals of a company with more than 100 years of experience in battery development, production and application?

Leave the responsibility for the maintenance of your batteries and chargers to the professionals: a GNB service contract provides you with exceptional economic advantages through time savings, cost savings and safety!



### Installation of Batteries and Systems for Network Power

- > Development of complete turnkey solutions from the design concept to installation and commissioning.
- > Installation according to legal and safety regulations including CE certification by approved installation technicians.
- > Training and certification of external installation technicians according to CE regulations.



- ✦ Inspection Contract
- ✦ Maintenance Contract
- ✦ Lifetime Warranty Contract
- ✦ Full Service Contract



»GNB Service – individualized, professional and all over Europe!«



**Exide Technologies**, with operations in more than 80 countries and more than 130 years of experience, is one of the world's largest producers and recyclers of lead-acid batteries. The company develops state-of-the-art energy storage solutions for the automotive and industrial market. Leading car, truck and lift truck manufacturers trust in Exide Technologies as an original equipment supplier. Exide also serves the aftermarket through a portfolio of successful and well-known brands.

Exide Transportation manufactures batteries for light and commercial vehicles, as well as agricultural and marine leisure applications. Industrial markets – under the division **GNB Industrial Power** – include efficient energy storage solutions for motive power applications such as lift trucks, cleaning machines and other commercial electrical vehicles, and network power applications such as telecommunications systems, renewables, and uninterruptible power supply (UPS).

Exide's engineers have always been at the forefront of bringing important innovations to the industry. Exide's ISO/TS-certified manufacturing facilities ensure that customers receive products that are produced with maximum efficiency and fulfill the highest quality standards, while minimizing impact on the environment.

Exide's extensive sales and distribution network provides quality service and delivers on time to its customers. Its world-class recycling facilities ensure that batteries will be reused, helping to make a positive contribution to the environment. Exide also provides services, accessories and energy consulting to its clients.

- Headquarters
- Manufacturing plants
- Recycling plants
- Distribution centers
- Main sales offices
- R&D centres

Manufacturing plants ISO 9001 and ISO 14001 certified  
Automotive plants IATF 16949 approved



Subject to alterations  
NXCFTEPDF01120